

# 설치: 서버

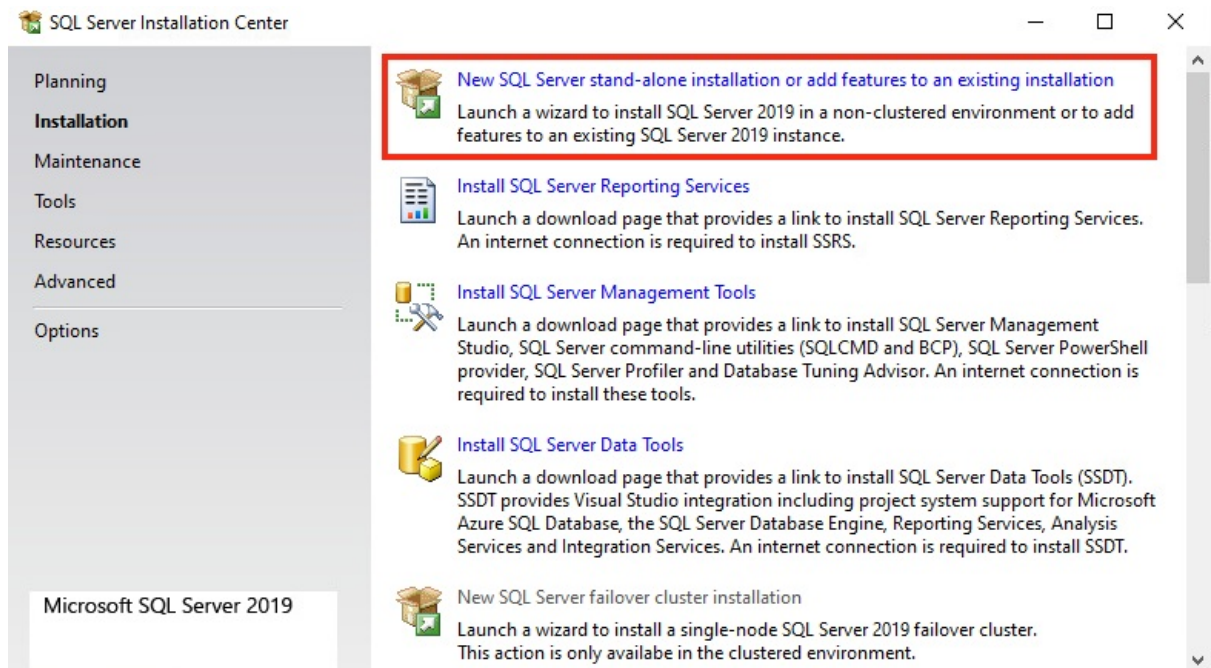
## 개요

App Control 서버 설치 방법 가이드 문서입니다.

## 진행 방법

### 1. SQL Server 설치

App control 서버 설치 전, SQL 설치가 선행되어야 합니다.



- 'SQL Server Installation Center' 실행 > 'New SQL Server stand-alone Installation' 버튼을 클릭하여 설치 진행

## Feature Selection

Select the Enterprise features to install.

Product Key

License Terms

Global Rules

Microsoft Update

Product Updates

Install Setup Files

Install Rules

**Feature Selection**

Feature Rules

Instance Configuration

Server Configuration

Database Engine Configuration

Feature Configuration Rules

Ready to Install

Installation Progress

Complete

Looking for Reporting Services? [Download it from the web](#)

Features:

Feature description:

**Instance Features**

- ☒ Database Engine Services
  - ☐ SQL Server Replication
  - ☐ Machine Learning Services and Language
    - ☐ R
    - ☐ Python
    - ☐ Java
  - ☐ Full-Text and Semantic Extractions for Search
  - ☐ Data Quality Services
  - ☐ PolyBase Query Service for External Data

The configuration and operation of each instance feature of a SQL Server instance is isolated from other SQL Server instances. SQL

Prerequisites for selected features:

Already installed:

- Windows PowerShell 3.0 or higher
- Microsoft Visual C++ 2017 Redistributable

Disk Space Requirements

Drive C: 1198 MB required, 88505 MB available

Select All

Unselect All

Instance root directory: C:\Program Files\Microsoft SQL Server\ ...

Shared feature directory: C:\Program Files\Microsoft SQL Server\ ...

Shared feature directory (x86): C:\Program Files (x86)\Microsoft SQL Server\ ...

&lt; Back

Next &gt;

Cancel

- 'Database Engine Services' 및 'Client Tools Connectivity' 체크박스 선택

## Database Engine Configuration

Specify Database Engine authentication security mode, administrators, data directories, TempDB, Max degree of parallelism, Memory limits, and Filestream settings.

Product Key

License Terms

Global Rules

Microsoft Update

Product Updates

Install Setup Files

Install Rules

Feature Selection

Feature Rules

Instance Configuration

Server Configuration

**Database Engine Configuration**

Feature Configuration Rules

Ready to Install

Installation Progress

Complete

Server Configuration Data Directories TempDB MaxDOP Memory FILESTREAM

Specify the authentication mode and administrators for the Database Engine.

Authentication Mode

☐ Windows authentication mode☒ Mixed Mode (SQL Server authentication and Windows authentication)

Specify the password for the SQL Server system administrator (sa) account.

Enter password: .....

Confirm password: .....

Specify SQL Server administrators

WIN-9HD5CAC5236\Administrator (Administrator)

SQL Server administrators have unrestricted access to the Database Engine.

Add Current User

Add...

Remove

&lt; Back

Next &gt;

Cancel

- 'Mixed Mode' 를 선택하고, SQL Server administrator 계정에서 사용할 패스워드 입력

- [Add Current User] 선택하여 사용할 Windows 계정 추가

## Database Engine Configuration

Specify Database Engine authentication security mode, administrators, data directories, TempDB, Max degree of parallelism, Memory limits, and Filestream settings.

Product Key

License Terms

Global Rules

Microsoft Update

Product Updates

Install Setup Files

Install Rules

Feature Selection

Feature Rules

Instance Configuration

Server Configuration

**Database Engine Configuration**

Feature Configuration Rules

Ready to Install

Installation Progress

Complete

Server Configuration Data Directories TempDB MaxDOP Memory FILESTREAM

TempDB data files: tempdb.mdf, tempdb\_mssql\_#.ndf

Number of files: 4

Initial size (MB): 1,024

Total initial size (MB): 4096

Autogrowth (MB): 512

Total autogrowth (MB): 2048

Data directories: C:\Program Files\Microsoft SQL Server\MSSQL15.MSSQLSERVER

Add...

Remove

TempDB log file: templog.ldf

Initial size (MB): 1,024

Setup could take longer with large initial size.

Autogrowth (MB): 512

Log directory: C:\Program Files\Microsoft SQL Server\MSSQL15.MSSQLSERVER

...

&lt; Back

Next &gt;

Cancel

\* 선택 사항

- TempDB 선택하여 'data files' 및 'log file' 크기 사이즈 지정

## Complete

Your SQL Server 2019 installation completed successfully with product updates.

Product Key

License Terms

Global Rules

Microsoft Update

Product Updates

Install Setup Files

Install Rules

Feature Selection

Feature Rules

Instance Configuration

Server Configuration

Database Engine Configuration

Feature Configuration Rules

Ready to Install

Installation Progress

**Complete**

Information about the Setup operation or possible next steps:

Feature	Status
✓ Database Engine Services	Succeeded
✓ SQL Browser	Succeeded
✓ SQL Writer	Succeeded
✓ Client Tools Connectivity	Succeeded
✓ SQL Client Connectivity SDK	Succeeded
✓ SQL Client Connectivity	Succeeded

Details:

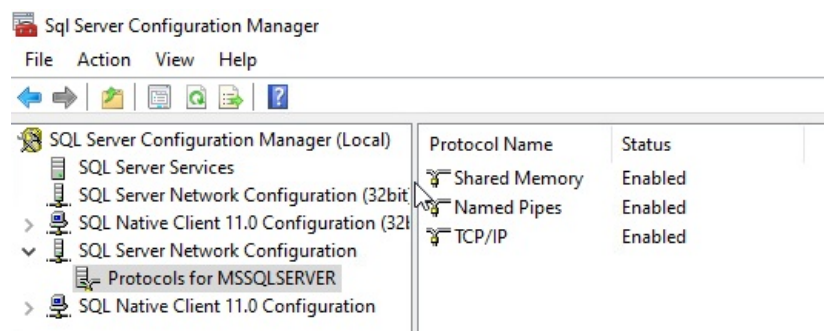
Install successful.

Summary log file has been saved to the following location:

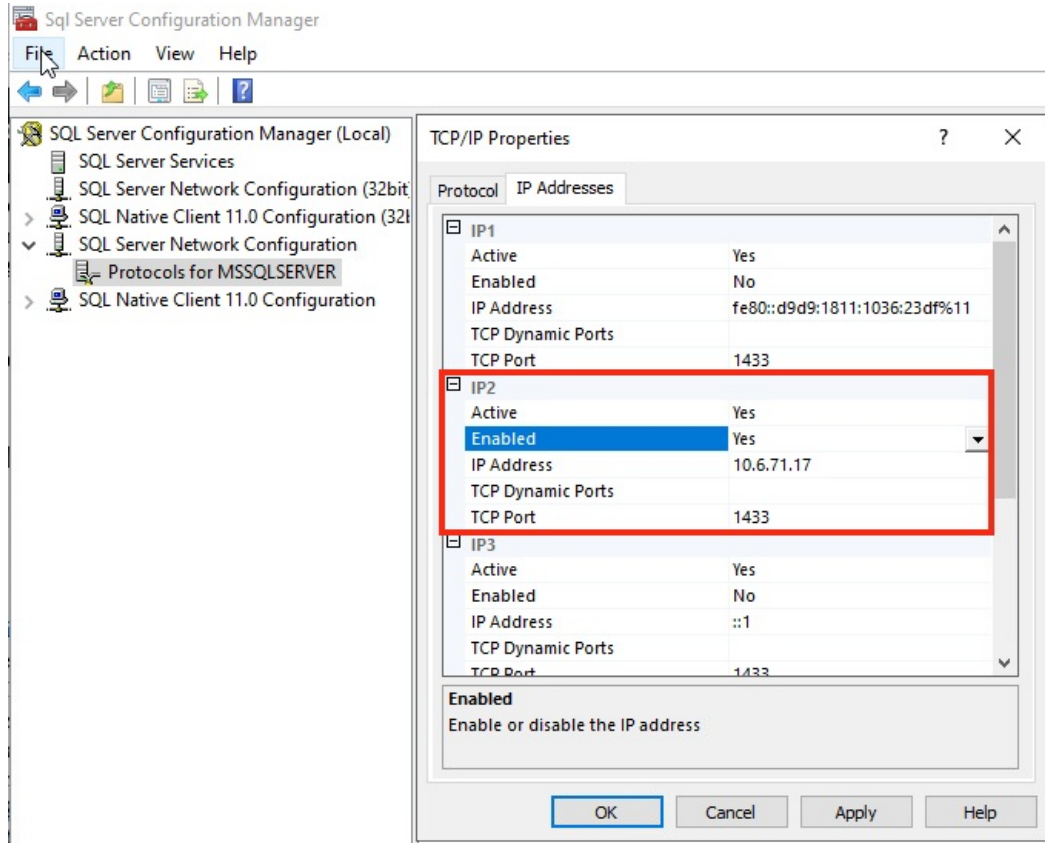
[C:\Program Files\Microsoft SQL Server\150\Setup Bootstrap\Log\20240114\\_230929\Summary\\_WIN-9HD5CAC5236\\_20240114\\_230929.txt](C:\Program Files\Microsoft SQL Server\150\Setup Bootstrap\Log\20240114_230929\Summary_WIN-9HD5CAC5236_20240114_230929.txt)

Close

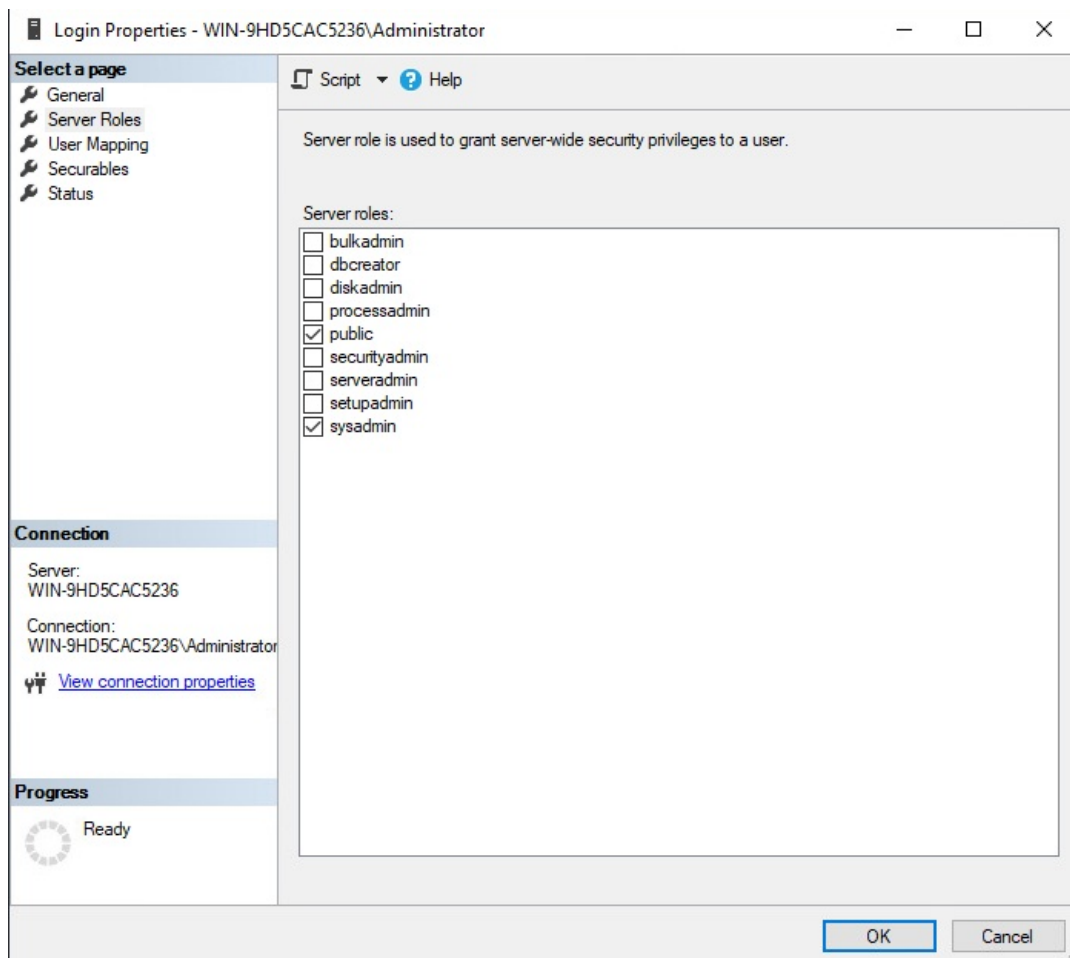
- MS SQL Server 설치 완료 확인



- 'Sql Server Configuration Manager' 실행하여 DB 접속에 사용할 프로토콜 확인



- TCP/IP 사용의 경우, 'TCP/IP' 활성화 설정 진행
- 활성화 작업 완료 후 SQL Server 서비스 재실행



- DB 액세스 계정에 대한 'sysadmin' 권한 할당

## 2. App Control Server 설치

참고 문서 : <https://docs.vmware.com/en/VMware-Carbon-Black-App-Control/8.10/cb-ac-server-installation-guide/GUID-17F7BE89-2E6F-4F69-92F8-0FA8F562E454.html>



8.9.x Server	8.8.x Server	8.7.x Server
<b>8.9.6, Released 10 April 2023</b> <ul style="list-style-type: none"> <li><a href="#">Announcement</a></li> <li><a href="#">Release Notes</a></li> <li><a href="#">Installer Download Link</a></li> </ul>	<b>8.8.6, Released 21 February 2023</b> <ul style="list-style-type: none"> <li><a href="#">Announcement</a></li> <li><a href="#">Release Notes</a></li> <li><a href="#">Installer Download Link</a></li> </ul>	<b>8.7.8 Released 21 February 2023</b> <ul style="list-style-type: none"> <li><a href="#">Announcement</a></li> <li><a href="#">Release Notes</a></li> <li><a href="#">Installer Download Link</a></li> </ul>

Rules Installer	Certificate Installer
<b>1.22, Released 14 September 2023</b> <ul style="list-style-type: none"> <li><a href="#">Announcement</a></li> <li><a href="#">Release Notes</a></li> <li><a href="#">Installer Download Link</a></li> </ul>	<b>21 February 2023</b> <ul style="list-style-type: none"> <li><a href="#">Announcement</a></li> <li><a href="#">Certificate Installer Download Link</a></li> </ul>

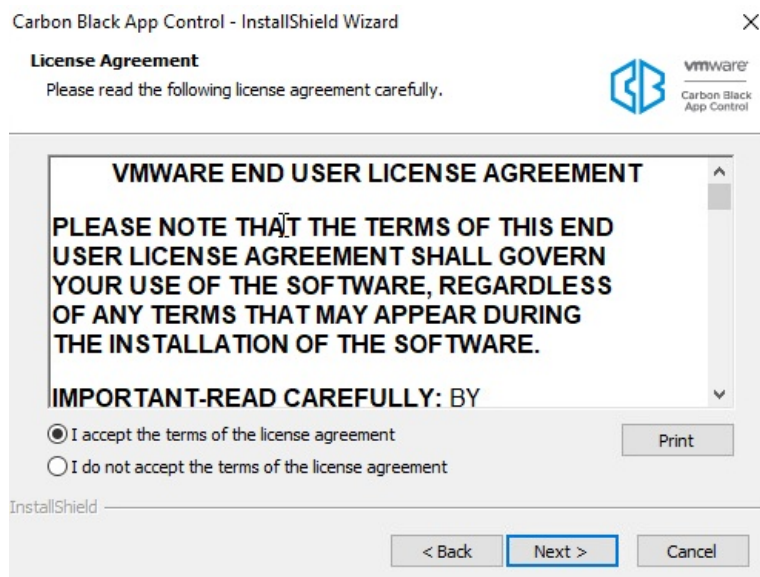
## Agent Information & Downloads

Windows Agent	Linux Agent	macOS Agent
<b>8.9.2, Released: 6 November 2023</b> <ul style="list-style-type: none"> <li><a href="#">Announcement</a></li> <li><a href="#">Release Notes</a></li> <li><a href="#">Installer Download Link</a></li> </ul>	<b>8.7.20, Released: 14 December 2023</b> <ul style="list-style-type: none"> <li><a href="#">Announcement</a></li> <li><a href="#">Release Notes</a></li> <li><a href="#">Installer Download Link</a></li> </ul>	<b>8.9.0, Released: 27 July 2023</b> <ul style="list-style-type: none"> <li><a href="#">Announcement</a></li> <li><a href="#">Release Notes</a></li> <li><a href="#">Installer Download Link</a></li> </ul>

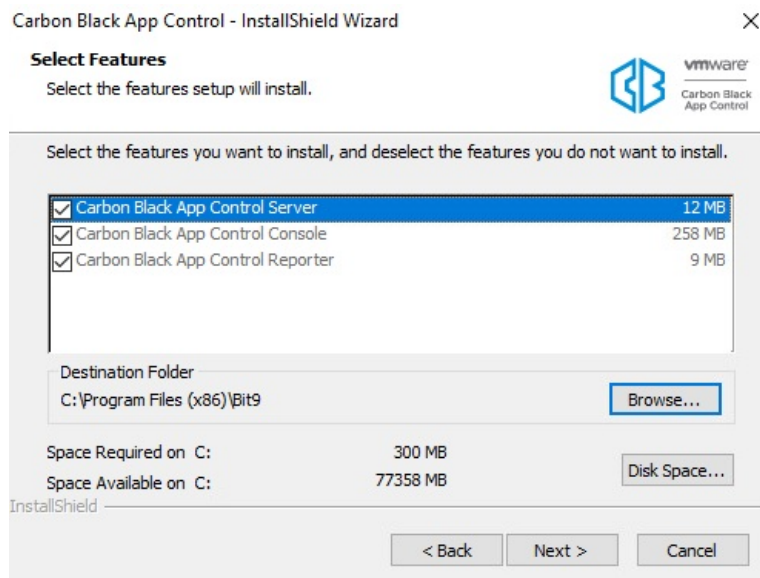
- App Control 인스톨러 다운로드

- Server Installer 다운로드
- Rules Installer 다운로드
- Certificate Installer 다운로드
- Agent Installer 다운로드 (MAC, Windows, Linux)

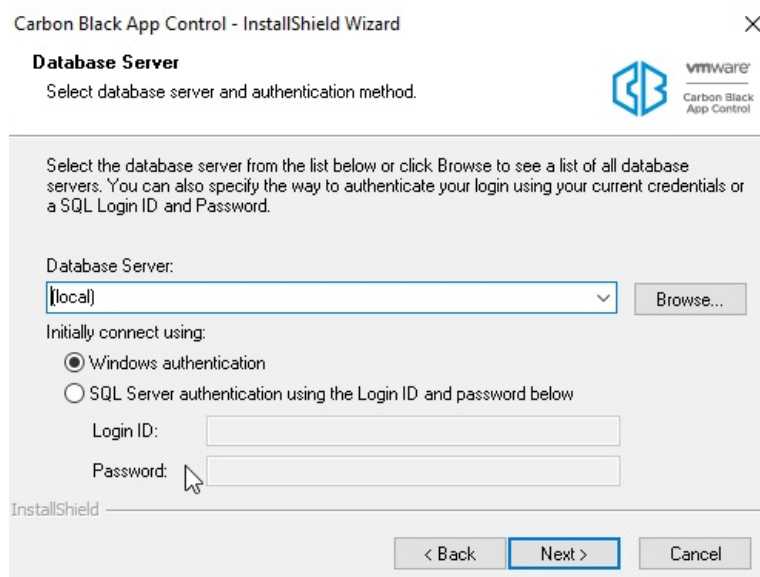
다운로드 : <https://docs.vmware.com/en/VMware-Carbon-Black-App-Control/services/cb-appc-release-info/GUID-97815946-2AA4-4488-BC12-B8DCABEBFE56.html>



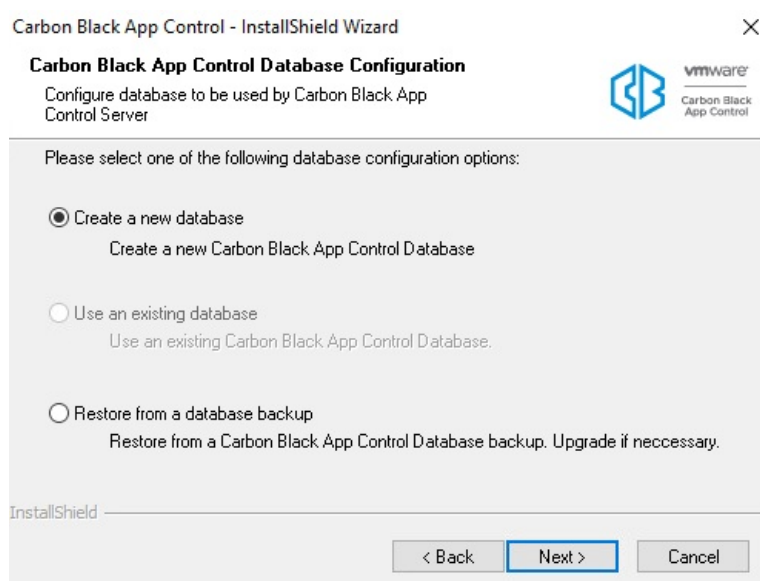
- ParityServerSetup.exe 프로그램 실행 및 라이선스 동의



- 설치 진행할 기능 및 설치 위치, 용량 확인



- (동일 환경에 DB가 설치된 경우) Database 서버 위치 '(local)' 선택 및 인증 방법 선택
- (외부 환경에 DB가 설치된 경우) Database 서버 위치 'FQDN or IP' 입력 및 인증 방법 선택



- 신규 설치의 경우, Create a new database 선택하여 신규 생성
- \* 기존 데이터베이스 사용의 경우, Use a exiting database 선택

Carbon Black App Control - InstallShield Wizard

**Log On Carbon Black App Control Server As**

Specify the user account to be used by Carbon Black App Control Server. The user account must be in the format "DOMAIN\Username" and must have access to the SQL database server.

☐ Local System Account  
☒ Specify Account

User name:  
win-9hd5cac5236\administrator

Password:  
●●●●●●●●

InstallShield

< Back Next > Cancel

- App Control Server와 SQL Server 에 액세스 가능한 Windows 사용자 계정 지정

Carbon Black App Control - InstallShield Wizard

**Server Configuration Options**

The following information is needed to configure the server

Please enter the information you would like your Carbon Black App Control Agents to use when connecting to the Carbon Black App Control Server.

Server Address : cbac.seungmin.test

Console Port: 41001

Agent Port: 41002

Carbon Black App Control Agents use secure SSL communication using the X.509 certificate generated by the Carbon Black App Control Server. After installation, you can substitute an existing certificate using the Security tab on the System Configuration page accessible from the configuration (gear) menu.

InstallShield

< Back Next > Cancel

- App Control 웹 콘솔 접속에 사용할 IP or FQDN 정보 입력

Carbon Black App Control - InstallShield Wizard

**Logon for Console Application**

Specify the user account to be used by Carbon Black App Control Console Application under IIS. User account must be in format DOMAIN\Username and have access to the database server and a 'Log on as a batch job' user right.

☐ Local System Account  
☒ Specify Account

User name:  
win-9hd5cac5236\administrator

Password:  
●●●●●●●●

InstallShield

< Back Next > Cancel

- App Control 웹 콘솔 IIS 서비스에 사용할 Windows 사용자 계정 지정 (App Control Server 및 SQL Server 액세스 가능 계정)




Carbon Black App Control - InstallShield Wizard


**Carbon Black App Control Console(IIS) certificate**

Select the X.509 certificate that will be used for Carbon Black App Control Console (IIS).

☒ Create New Self-signed Certificate for IIS

 Create an X.509 certificate using the Carbon Black App Control Console certificate template.

☐ Use Pre-existing Certificate for IIS

 Provide a pre-existing X.509 certificate for Carbon Black App Control Console (IIS) use.

InstallShield

< Back Next > Cancel

- App Control 웹 콘솔 인증서 선택

Carbon Black App Control - InstallShield Wizard

**Create X.509 Certificate for Carbon Black App**

The following information is needed to create an X.509 certificate for the Carbon Black App Control Console (IIS).

Please enter the information you would like to have displayed on the X.509 certificate.

Country Code:  Email Address:

State:  Enter Password:

City:  Confirm Password:

Company:

Department:

Common Name:

Subject Alternative Name:

InstallShield

< Back Next > Cancel

-- (Create New Self-signed Certificate for IIS 옵션 선택) 자체 인증서가 없는 경우 Carbon Black 인증서 신규 생성

Carbon Black App Control - InstallShield Wizard

**Use Pre-Existing X.509 Certificate for Carbon Black**

Select the pre-existing X.509 certificate file that will be used.

Please select the certificate for accessing Carbon Black App Control Console (IIS). Certificate is imported by specifying a certificate file (.pfx) and a password. Certificate Common Name or one of the SAN entries must correspond to the Server name.

Enter Certificate File:  Browse

Enter Password:

Confirm Password:

InstallShield

< Back Next > Cancel

-- (Use Pre-existing Certificate for IIS 옵션 선택) 자체 인증서가 있는 경우 인증서 업로드 사용

Carbon Black App Control - InstallShield Wizard

**Please enter Carbon Black App Control license key.**

Please enter Carbon Black App Control license key.

If you have received a license key, please enter it below or specify a license file.

Without a license key, Carbon Black App Control will automatically install as an Evaluation Version for 7 days. You can also enter a license key from within the Console at any time after installation.

☒ License key: Evaluation License

Enter License Key

☐ License file: Browse...

InstallShield

< Back Next > Cancel

- App Control 라이선스 입력 (7일간의 평가판 라이선스 제공)

Carbon Black App Control - InstallShield Wizard

**Carbon Black App Control Agent Management**

Specify global access method(s) for Carbon Black App Control management commands.

Provide global access to Agent management commands (for diagnostics, recovery, etc.) by specifying a user or group, a password, or both. This setting appears on the General tab of the System Configuration page accessible from the configuration (gear) menu.

☒ Specify global password for managing agents

Enter Password: 1 to 64 characters  
May not contain  
><%()@.[]{}:;^!""~.,

Confirm Password:

☐ Specify user or group allowed to manage agents

Windows: ☐ Pre-defined group ☐ User or group

Mac: ☐ User ☐ Group

Linux: ☐ User ☐ Group

InstallShield

< Back Next > Cancel

- 관리 시에 사용될 엔드포인트 에이전트에 대한 패스워드 입력 (생략 가능)

Carbon Black App Control - InstallShield Wizard

**Carbon Black App Control console**

Specify a password for the Admin account for the console (UI)

This password will be used to log in to the console with the Admin account.

- Check with your organization for any additional requirements
- Any combination of letters, numbers, or English-keyboard characters
- 64 character maximum
- 12 character minimum

Password:

Confirm Password:

InstallShield

< Back Next > Cancel

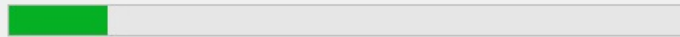
- App Control 웹 콘솔 admin 패스워드 입력

## Setup Status



The InstallShield Wizard is installing Carbon Black App Control

Installing Carbon Black App Control database...



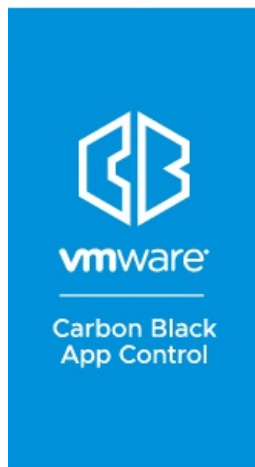
InstallShield

Cancel

- 설치 진행

## Carbon Black App Control - InstallShield Wizard

InstallShield Wizard Complete



< Back

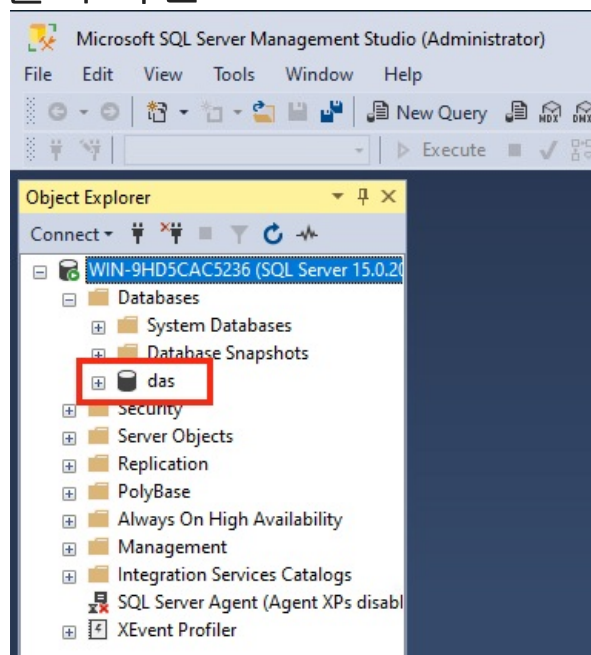
Finish

Cancel

- 설치 완료

\* 오프라인 서버 설치 시 : Certificate Install 필요

### 3. App Control 설치 확인



- App Control 서버에서 생성한 'das' DB 생성 확인

Name	Status	3% CPU	20% Memory
Windows Explorer		0%	24.2 MB
<b>Background processes (34)</b>			
AggregatorHost		0%	1.7 MB
AzureArcSysTray		0%	2.1 MB
Carbon Black App Control Reporter Service		0%	20.1 MB
Carbon Black App Control Reporter			
Carbon Black App Control™ Server Service (32 bit)		0%	8.3 MB
Carbon Black App Control Server			
COM Surrogate		0%	2.6 MB
COM Surrogate		0%	3.2 MB
CTF Loader		0%	3.3 MB
Host Process for Windows Tasks		0%	5.4 MB
Host Process for Windows Tasks		0%	2.0 MB
Microsoft Distributed Transaction Coordinator Service		0%	2.0 MB
Microsoft Software Protection Platform Service		0%	2.9 MB

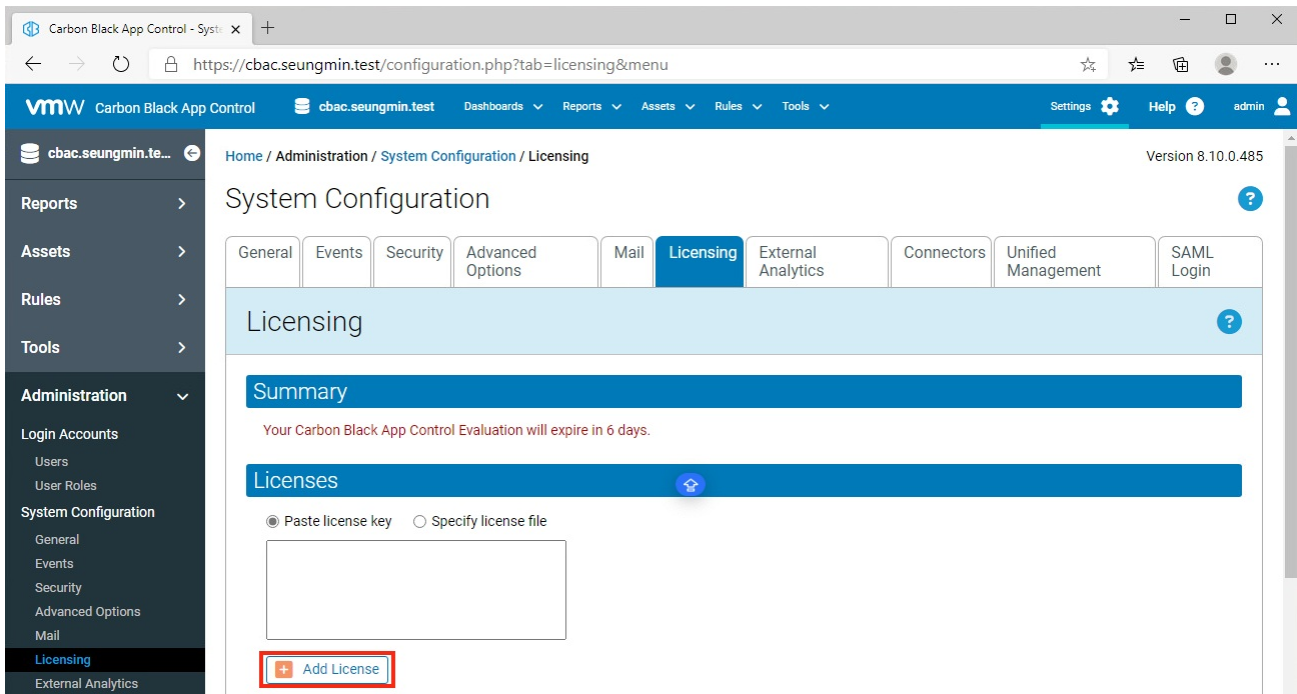
- 로컬 '작업 관리자'의 프로세스 동작 확인

- Carbon Black App Control Reporter Service 프로세스
- Carbon Black App Control Server Service 프로세스

## 4. App Control 초기 설정

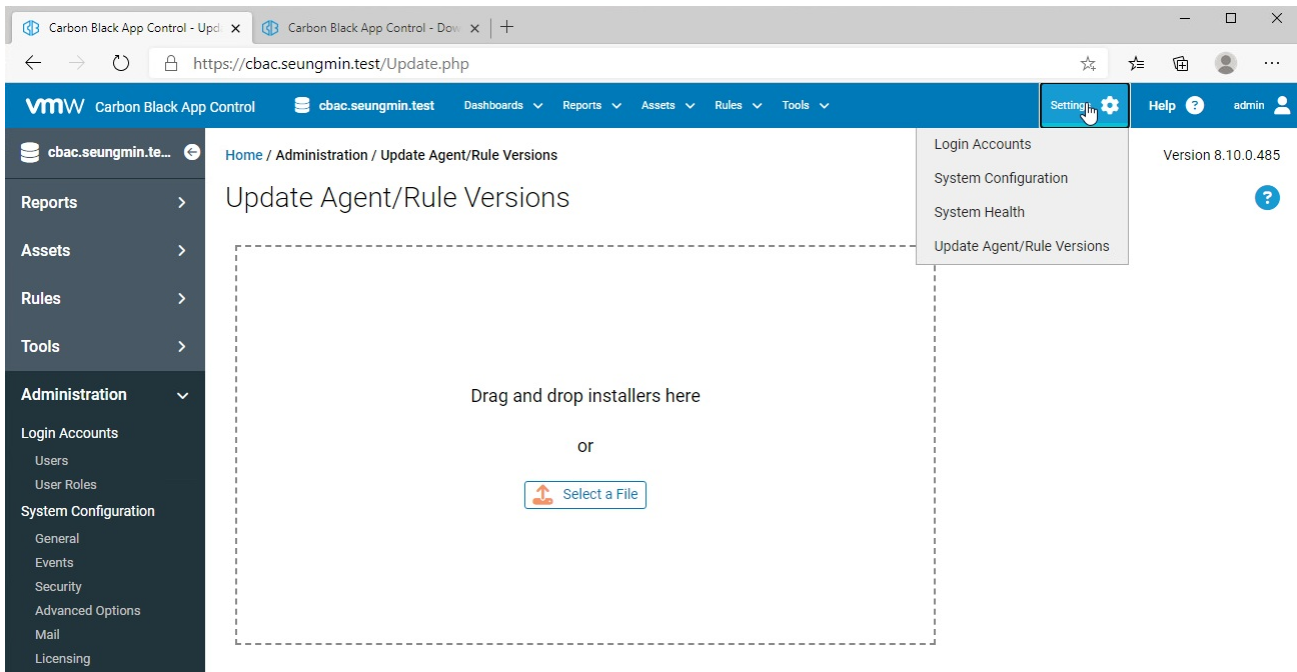
### 4.1 라이선스 적용

- 오른쪽 상단의 [Settings] > [System Configuration] 메뉴 선택



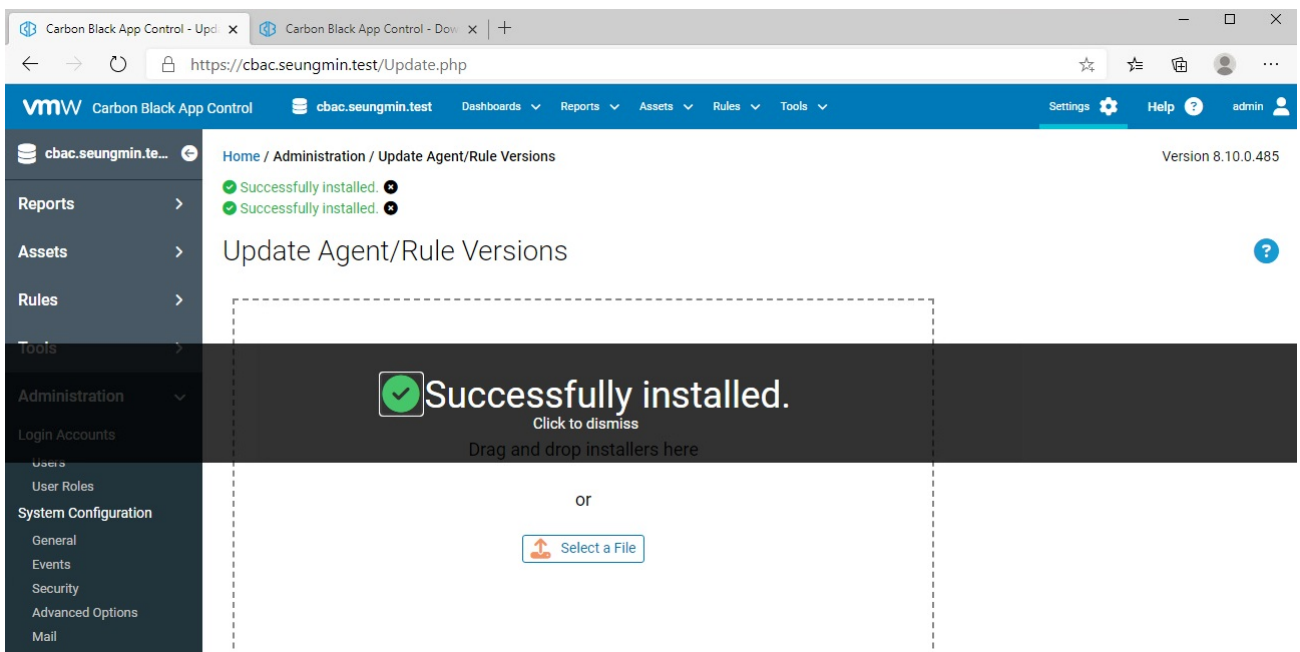
- [Licensing] 탭 이동 > '라이선스 파일 선택' 후 [Add License] 버튼 클릭하여 라이선스 적용

## 4.2 에이전트 및 룰 업로드



- 오른쪽 상단의 [Settings] > [Update Agent/Rule Version] 메뉴 이동





- 'Select a File' 또는 '드래그 앤 드롭' 방식으로 룰 및 OS 별 에이전트 업로드

- LinuxHostPackageInstaller.exe
- WindowsHostPackageInstaller.exe
- MacHostPackageInstaller.exe
- RulesInstaller.exe

## Policies

Group By: (none) Ascending

[Show Filters](#) | [Show Columns](#) | [Export to CSV](#) | [Refresh Page](#)

Action Add Policy

Automatically Upgrade Agents

Disable Automatic Agent Upgrades

		Connected Enforcement	Disconnected Enforcement	Total	Connected
<input type="checkbox"/>	Default Policy	None (Visibility)	None (Visibility)	0	0
<input type="checkbox"/>	Local Approval Policy	Local Approval	Local Approval	0	0
<input checked="" type="checkbox"/>	Template Policy	None (Visibility)	None (Visibility)	0	0
<input type="checkbox"/>	test	None (Visibility)	None (Visibility)	0	0

4 items Page 1/1 25 rows per page

- [Rules] > [Policies] 메뉴 이동하여 룰 생성 및 에이전트 룰 적용

Download Carbon Black App Control Agent Install Packages

Carbon Black App Control protects your computer and the network from viruses, spyware, and other malicious applications.






Installing the Carbon Black App Control Agent software is simple:

- 1. Click the installation setup file for the policy assigned to you by your network administrator.
- 2. Download the installation setup file to a convenient location on your hard-drive.
- 3. For executable files, double-click the newly downloaded file to install the Carbon Black App Control Agent. For archive files, see the User Guide for installation instructions.

Carbon Black App Control Agent Installation Setup Files



Refresh Page

Policy Name	Install Package		Description	Date Created 	Date Modified
test	Windows (test.msi)	sha256: 	a4532d760353a240336802c979f9e0f6c62874788e201d879000739b8d15ebf6	Jan 15 2024 10:51:04 PM	Jan 15 2024 10:56:37
	Windows (test.zip)	sha256: 	faacf5433f13e8a551e06db57393793cd06767994a5ef5164e3f5a11331624f3		
	Mac (test-mac.dmg)	sha256: 	0356494daddc8ff94bdb407ba06e60dd67fa99d2473fb45f620cd2249026310c		
	Red Hat (test-redhat.tgz)	sha256: 	6b983aa9bb6cc9090ce68619beeda21405fba7f649c2cb8f77ab9ef9f8c5293		
1 item		Page 1/1			

- 에이전트 다운로드 페이지로 이동하여 에이전트 업로드 확인

에이전트 다운로드 페이지 : <https://IP or FQDN/hostpkg/>

버전 #9  
★생성 11 1월 2024 14:19:42  
✍수정 18 4월 2025 16:39:15